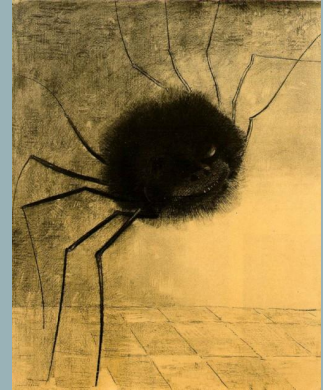
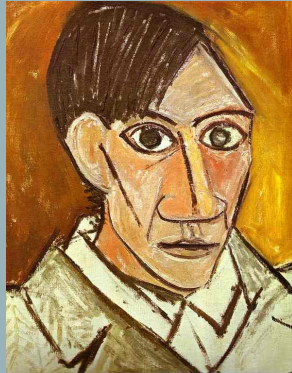


# Comparative Study

By : Soleda Balleza



This study will compare two works by Picasso, “ Jacqueline with Flowers”, 1954) and (“Self Portrait”, 1907) and one work by Odilon Redon(“The Smiling Spider, 1887). I will use cultural influences, their artistic styles, and the formal elements of art to guide the focus of my study. The artists discussed throughout this study have had significant influence on the techniques used to create some of my pieces as well as the overall look of them.

# Evaluation of Cultural Significance of Picasso



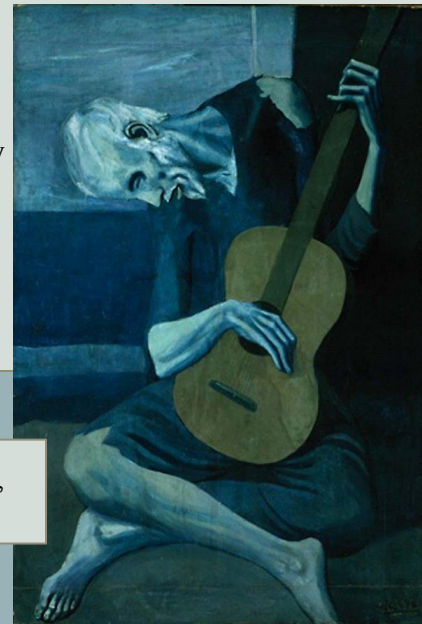
Pablo Picasso, (1932),  
"Girl Before A Mirror"

Picasso was a significant artist of the Cubism Movement, as one of the founders of the movement Picasso rejected the traditional single viewpoint that many artist before him used. Heavily influenced by African Art the purpose of the movement was to present a new way of perceiving the world. At the start this movement was known for distorting objects and then creating them in an abstract way. **Color** became an important part of the distortion of these objects. The colors used during this movement were bright and vibrant, this contrasts a great deal with the art Picasso produced during his Blue Period.

Picasso's Blue Period was between the years 1901 and 1904. During this time Picasso strictly used **hues** of blues and blue-greens. Not very often he would mix in other colors to make the tones he created warmer. The Blue Period was very monochrome. The works created during this time often featured beggars, poverty/instability, and the elderly. It is inferred that the art created reflects on the time Picasso spent in Spain, however during this time Picasso lived in Paris.



Pablo Picasso, (1921), "Three Musicians"

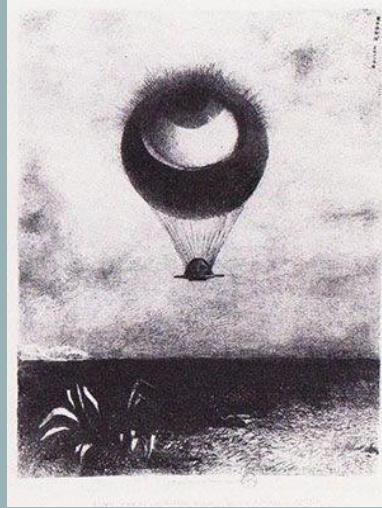


Pablo Picasso, (1903),  
"Old Guitarist"

# Evaluation of Cultural Significance of Odilon Redon

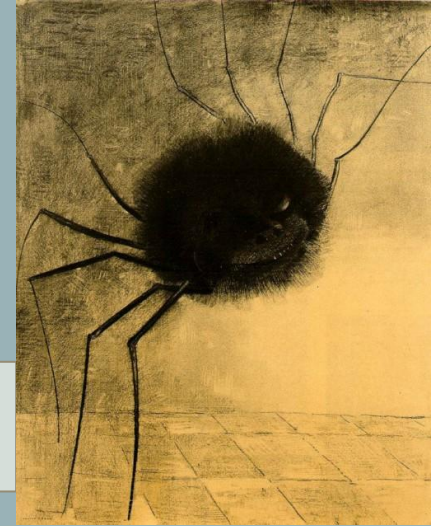


Odilon Redon,(1914),“The Cyclops”



Odilon Redon,(1882) “The Eye, Like a Strange Balloon Moves Towards Infinity”

Odilon Redon,(1881), “The Smiling Spider”



As an artist Redon played a major role in the development of the Symbolist movement. This movement first appeared at the end of the Post-Impressionism movement. The key idea behind the Symbolist movement was to send a message or the theme of a piece in an indirect way. This movement allowed artists to further increase the depth of their works, the elements often used in this movement were mythological creatures, animals that were morphed with human features, and natural elements such as flowers. This idea was often achieved through a dreamlike (nightmarish) and unrealistic look.

To convey the above ideas and beliefs of the Symbolist movement Redon worked in many mediums that varied from oil paints on canvas to charcoal. When comparing his earlier work to his later works there is a dramatic change in his chosen color palettes. His earlier works heavily featured grey scales whereas later he began to use more bright/vibrant colors. This could be contributed to the solidification of the ideas behind the Symbolist movement.



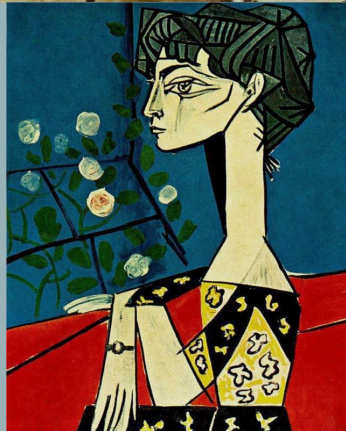
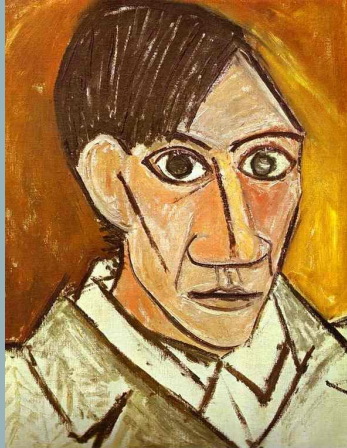
# Evaluation of Function and Purpose of "Self Portrait" "Jacqueline with Flowers"

## **Function:**

The overall function of "Self Portrait" is to show a personal narrative. By comparing Picasso's earlier portraits to his later there is a clear difference in the style and techniques the pieces were made with. This piece in particular highlights a key idea Picasso showed through his different periods, he believed his ever growing stylistic choices were due to the changing themes behind his pieces.

## **Purpose:**

The purpose behind many of Picasso's portraits was to communicate the idea that art is forever evolving and changing. Picasso in his later years of creating art, when "Self Portrait" was made strayed away from realism as he believed that the themes behind his pieces required him to widen his art making techniques. The changing of his technique and styles are seen in his often changing color palettes, the use of highlights and shadow, and as well as his use of line.



## **Function:**

In his later years as an artist Picasso began the Cubist art style. This is heavily seen in "Jacqueline with Flowers". The function of this piece is expressiveness. While developing Cubism Picasso wanted to stray away from life like renderings in his works, he wanted his works to focus on the idea of how humans interpret objects through multiple different angles. Picasso wanted to show more than one angle in his rather than showing a realistic renditions of objects and people.

## **Purpose:**

The purpose of "Jacqueline with Flowers" is to express a different look on reality. The cubism style used to create this piece create a more realistic look on how people actually observe things, however the stylistic choices make the pieces appear more abstract. The look of the piece clashes with the purpose of the peace which further helps emulate a more realistic approach of how the world is viewed.

# Evaluation of Function and Purpose of "The Smiling Spider"

## Function:

"The Smiling Spider" is used by Redon to show an expressive function. This piece strives to question the norms of reality through the blending of elements seen both in reality and dreams. Redon is able to achieve this idea by incorporating humans within his pieces, as well as his chosen color palette in this piece. The hue that appears the most is black, the use of this adds a sense of mystery and unknown, this intertwined with the human facial features creates a nightmarish look to the presented figure.

## Purpose:

The purpose of this piece is to disturb the viewers. This piece was created during the Symbolist movement, this movement focused heavily on the blending of reality and the impossible. Redon was able to achieve this idea by heavily incorporating human features. He often would completely replace an animals natural features with features commonly associated with humans. The figures Redon created were often viewed as something from a nightmare. This idea was backed up by his chosen color palettes. Many of his works were created using greyscales with a heavy emphasis on the use of black hues. The high uses of darker colors creates a sense of uneasiness and mystery. These feelings again add to the nightmarish look of Redons pieces. With the consistent use of these elements Redon was able to create a multitude of pieces that continually shocked and disturbed the people who viewed his art.



# Analysis of Formal Qualities of Picasso

Picasso had many different eras as an artist, however throughout them many of the same elements can be seen throughout. The formal qualities that I was able to pick out are line, color, shape, and form.

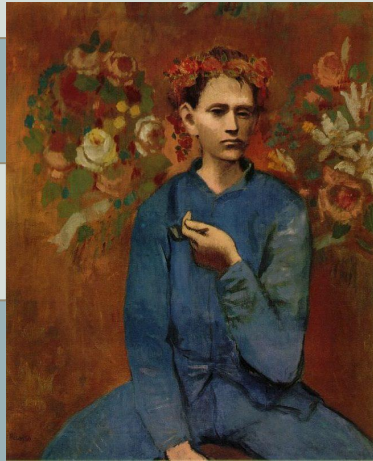
**Line-** Picasso often used black lines that varied in width this element was used to put emphasis on certain aspects of a piece. Another way Picasso often used line was to break the piece into different parts, this is most often seen in his Cubism works. By using line Picasso was able to unify a piece or make it feel like multiple pieces put together.

**Color-** Color is the one element that changes the most during Picasso's different eras. Many of these eras were based on a single color for example his blue period or his rose period. The colors in Picasso's work often reflected what he was dealing with in the real world.

**Shape/form-** When looking at Picasso's works from multiple periods it can be seen that shape and form go hand in hand however this idea of breaking everyday life into simple organic and geometric shapes is most prevalent in his Cubism Movement. Picasso was able to achieve this technique at a high skill because he believed before you are able to break reality into abstractness you must be able to produce it how it appears in the real world.



Pablo Picasso, (1903), "The Blind Man's Meal".



Pablo Picasso, (1905), "Garçon à la pipe" (Boy with a Pipe).



Pablo Picasso, (1937), "Guernica".



# Analysis of Formal Qualities of Redon

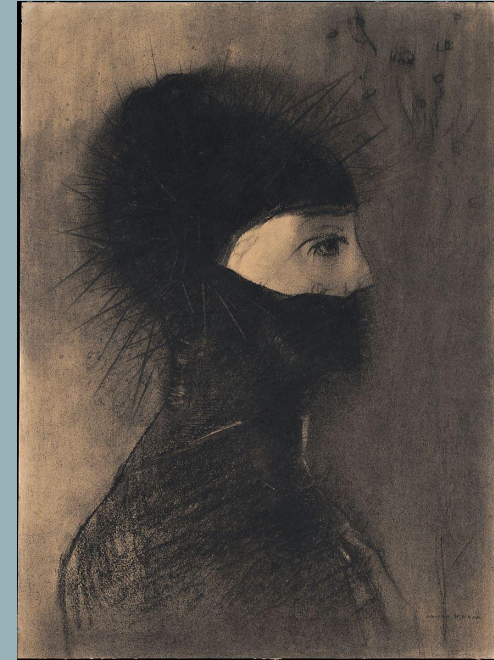
When I was looking at work produced by Redon I found his pieces fall under two categories, color and grey/black scale. However the elements that appear in both remain constant, what elements I found were line, texture, and form.

**Line-** Many of the lines that appear in Redon's pieces are thin, black, and organic. The lines are used to bring the piece together by showing movement in the backgrounds and figures/forms. This movement that is created in the piece allows the meaning behind Symbolism to be farther showed in his final pieces of work.

**Texture-** Redon's uses texture to further the meaning behind his Symbolism works, which was to put the human form/features in unrealistic places. The textures Redon produces add a sense of uneasiness to the pieces because much like the person in the pieces it doesn't quite fit.

**Form-** being part of the symbolism this element is common throughout many of the artists. Redon was able to achieve a high sense of unnaturalness in his works by placing the human form/features in unrealistic places. He is able to achieve a high level of success because the forms/facial features he created looked to be life like.

Odilon Redon, (1903-1910, "Orpheus".



Odilon Redon, (1891), "Amor".

# Evaluation of Formal Qualities of “Jacqueline With Flowers”



Pablo Picasso, “Jacqueline With Flowers, (1954)

By adding the flowers to the left hand side the piece is given **asymmetrical** balance. The black **lines** are rigid and moderately thin.

A common pattern in this piece is color blocking, however here he uses to different hue instead of different shades of one hue. As well the yellow and black greatly contrast with the red-orange which draws attention to the dress.

This hand is placed in the background and it a few simple brushstrokes, this shows how Picasso was dedicated to the bigger picture not the minor details of a piece.

These **organic shapes** add **texture** to the piece. There are two main sources of texture, the flowers in the background and the details on the dress in the foreground. The texture is important because adds depth compared to the harsh flat lines and shapes.

The **lines** that make up the hair are fairly thick which gives a color block look, this allows for the multiple **hues** used to make the hair dimensions.

The elongated shape of the neck which is made up of an **organic shape** is a cubism technique. Cubism is abstracting objects to make irregular shapes.

The **thin black line** that breaks the red-orange and blue apart acts as a barrier. This is an important element of these piece because adds tension between the bottom and tops of the piece.

In this painting Jacqueline is the main **form** of the piece. She was Picasso’s second wife, for a period of time she was the main focus of his paintings. Many of his works that feature women were his muses. The women inspired many of his different periods of paintings, an example is his Rose Period.



# Evaluation of Formal Qualities of “Self Portrait”

Around the head the hues are darker, this is meant to show shadows around the head. This gives the piece a 3-d affect instead of being a flat painting.

This small detail shows that Picasso was aware of the hair there, however because it is just is thick lines it shows that they aren't meant to be focused on.

The blocky shapes that make up the clothing are geometric shapes. This is important because Cubism is abstracting reality into organic and geometric shapes.

By comparing Picasso’s self portraits from various years it can be seen that in the later years his pieces are heavily influenced by Cubism and stray far from reality.



This light hue of yellow-orange adds a dimension to the background but also **asymmetrical** balance .

The irregular colored pupil breaks up the **symmetry** of the face. All of the features are similar in size and the pupil adds a **asymmetrical** balance.

The nose is the only overdrawn feature on the face, this is to draw the viewer's attention to it. This could also be to distract from the pupil of the eye on the right.

The color scheme of this piece is more warm hues. The lips have more of a cool grey tint making them blend in almost unnoticeable.

Pablo Picasso, “Self Portrait”, (1907)

# Evaluation of Formal Qualities of “The Smiling Spider”

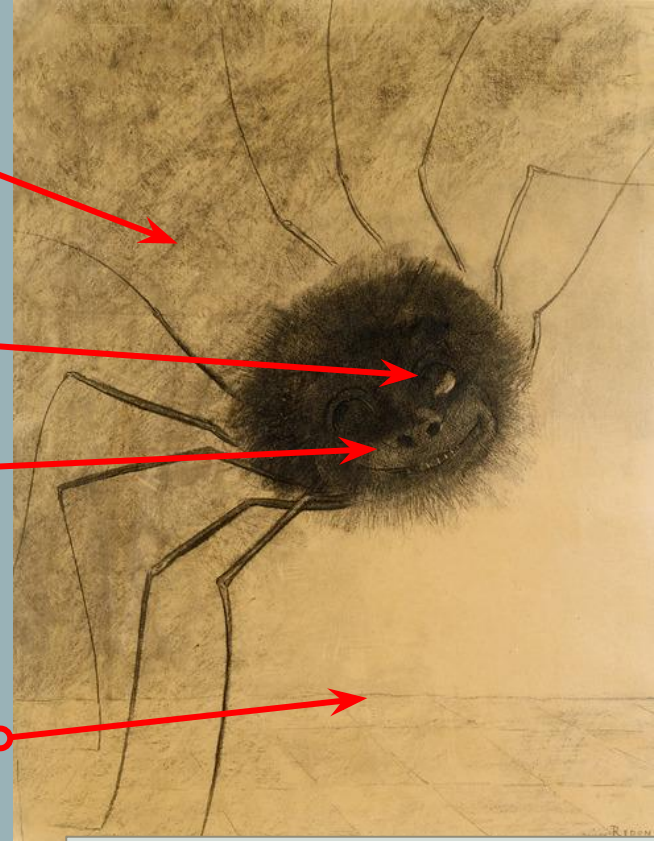
The eye that can be seen is proportional to the rest of the facial features which means that the viewers attention is supposed to be on the whole face. As well the shapes/forms that make up the features are both geometric and organic.

This use of shading shows that there is a light source, which adds to the realism of the overall piece.

The mouth and nose on the spider clearly are clearly inspired by humans facial features. This directly correlates to the Symbolism Movement. As well a common theme in Symbolism was emotion. In this piece the spider is smiling which contrasts to the darkness of the body.

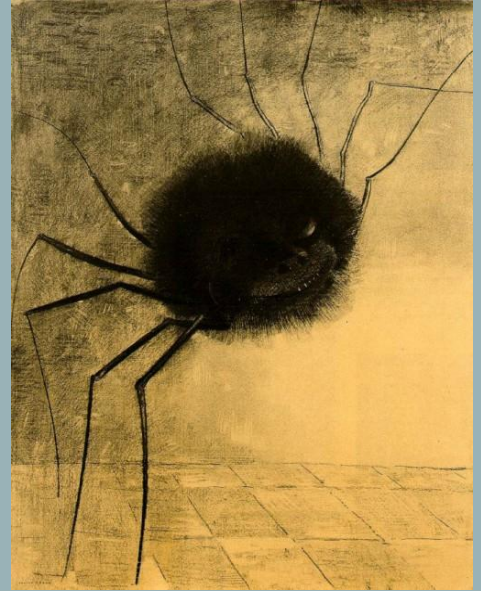
Popular themes during the Symbolism Movement were emotions and mixing reality with the unimaginable. Artist during this movement often were able to do this by placing human facial features in odd situations, this often appeared in Odilon Redon's works. Works produced during this time often included the artist own feelings and ideologies.

The line between the wall and the floor adds to the realism of the piece. This line gives the piece a 3D perspective which adds to the nightmarish theme of the piece, it makes it seen as if the spider is moving toward the viewer.



Odilon Redon, (1891), “The Smiling Spider”

## Comparison of Formal Qualities-Line



The three pieces that are presented all contain a varying amount of black lines. Each piece incorporates both thick and thin lines, that can be seen going horizontal and vertical. In Redon "The Smiling Spider" these lines are used to create the legs, which are composed of straight thin lines. As well thin short lines were used to give the body of the spider texture and a 3D effect. In Picasso's two pieces these lines are used to give the human forms dimension to their faces. Like Redon's piece these lines are used to create hair, however not to give it texture.

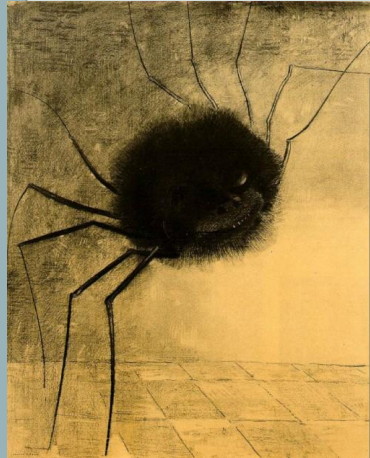
By looking at the three pieces side by side it can be seen that the main purpose of these lines is to give each piece dimensions and depth. Without thick lines breaking each piece apart they would be flat geometric and organic shapes that are shaded/filled with color.



## Comparison of Formal Qualities-Color

A major element of Picasso's works is color. He uses it to express emotion, many of periods so let focus on a single hue or a multitude. One thing to note is that many of the works have little to no blending, for example in "Jacqueline with Flowers" there are multiple shades of one hue placed next together. Each element of the piece is broken apart by thick black lines. By deciding to have the lines be black Picasso is able to create a color block effect.

In Picasso's "Self Portrait" there is a small amount of blending in in the skin tone, however it looks as if the pink hue was placed on top of the skin tone. This could be to imitate a flush in the cheeks or to show where the light source hits the face. As well compared to "Jacqueline with Flowers" this piece has a more warm tone palette.



By looking at these three pieces it can be seen that "The Smiling Spider" has a more monotone color palette. However this color scheme is most common in many of Redon's beginning work. When he does use color they often are similar to Picasso's in the sense that they are vibrant. When looking at his works that include color his color choices appear to be more pastel.

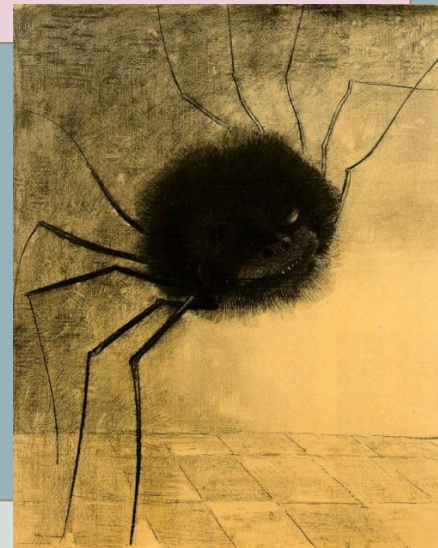
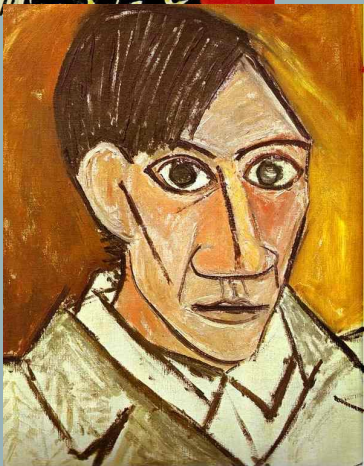
Although this piece was created in black and grey scales it is able to create a higher degree of realism and depth compared to Picasso's works. This piece has an almost 3D effect because of the thin straight black line that separates the floor and the wall that the spider appears on/in front of. Another difference is that in Picasso's work the human face features are more distinctive, where as in "The Smiling Spider" they gave blends in with the texture of the spiders body because they black tones used to create both are almost identical.

# Comparison of Artistic Styles



## Similarities

- Both artists use the same formal qualities throughout their works, even in different eras of their work.
- Both artists are able to successfully abstract reality.
- Both artists used line, color, and form as key elements of many of the works that they produced.
- Creating a sense of unusualness/strangeness was a key element of both artists' styles that they used to produce work.
- Lines in both pieces are the only elements that remain contrast from work to work.



## Differences

- Picasso's color palettes compared to Redon's are more saturated and bright.
- Redon's pieces appear more life-like because of his attention to human features, and through his use of texture.
- The figures that appear in Picasso's works have over-exaggerated features, and the whole figure looks flat.
- Redon's use of texture allows his pieces to look more life-like.
- Redon found a style that worked for him and stuck to it, whereas Picasso tried many different styles as an artist.

# Comparison of Formal Qualities~Forms

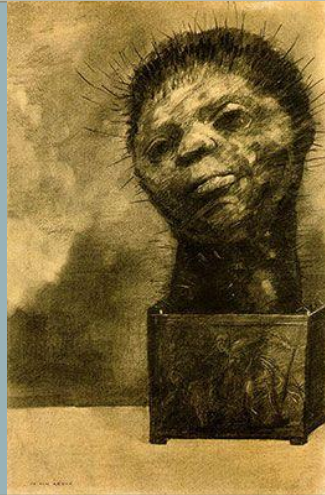
By looking at a collection of works from both Picasso and Redon it's easily seen that forms are a major element that appear repeatedly through their works.

Picasso creates his forms by using geometric and organic shapes, his forms are meant to convey emotions through his color choices and facial expressions.

Redon takes a more realistic approach when it comes to creating forms. Unlike many of Picasso's works Redon's forms features are proportional. However unlike Picasso's Redon places the human face on odd objects. By doing so he too is able to express emotion, they just have a darker undertone.

*Picasso:*

- Composed of multiple geometric and organic shapes
- Bold thick lines, both straight and curved
- Oversized and enlarged features
- Convey real human emotions
- Asymmetrical balance between features that are meant to mirror one another



Odilon Redon, (1881), "Cactus Man".



Pablo Picasso, (1937), "The Weeping Woman".

*Redon:*

- Composed of realistic human features
- Proportions between the features on the face are correct
- Use highlights and shadows
- Conveys real human emotions
- The forms are placed in a dream like scenario
- Forms appear as a large key element
- Forms are identifiable as a realistic human face
- Smaller details like eyelashes go unnoticed
- Forms show happiness, peaceful, or neutral expressions



# Comparison of Cultural Significance/Context

The cultural significance of artists depend on the movements they are/were apart of, as well as the state of the the world(their environments). The significance of an artist can also be measured by how they were perceived by people while they were creating work, and how these same works are viewed by people now.



Pablo Picasso, (1906), “Portrait of Gertrude Stein”.

- The obvious difference between these two artists is that they both took part in different art movements, however between their different movements there are similar motives that started the movements
- Picasso was heavily influenced by the world around him, this meant many pieces he created showed the grief, happiness, ect of both himself and the general population
- Redon took part of the symbolism movement the goal behind this movement was to invoke deeper thoughts in the viewer, by doing this often viewers of Symbolism works feel discomfort
- Both artists wanted to invoke something deep within their viewers, and both were able to successfully do this



Odilon Redon, (1900-1905), “Bouquet of Flowers”.

# Personal Art & Pablo Picasso

## Function and Purpose

### Picasso's Work

- To tell a personal narrative
- Further develop his ever changing techniques and styles
- Capture a moment in time
- Explore the idea of art is always evolving
- Take a new approach on realistic art

### Personal Work

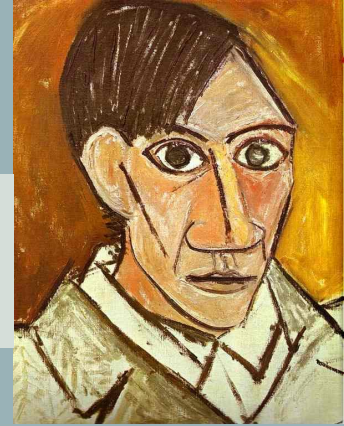
- The purpose of my piece is capture the present and past coming together
- Explore how childhood provided the basic skills needed for life later on
- The function of my piece is to comment on the importance of growing
- Capture many moments of time

**Similarities:** Both pieces cover the idea of changing and evolving. As well both pieces aim to capture time. The purposes of the pieces relate heavily to to the time that was captured within the pieces. Lastly both pieces focus on the human condition without directly saying this.

**Differences:** Picasso's works aims to capture a single moment of time in his life, where as my works focuses on many moments over a period of time. Picasso's work focuses on him and personal expression where as my piece focuses on not only myself but those who view the piece.



"Then and Now"  
block print, 22 cm  
x 15 cm, 2019.



## Formal Qualities

### Similarities:

- The forms in both pieces have been broken into their most basic forms
- The forms are in the center of the pieces
- The pieces have the most color variety in the backgrounds
- The forms are constructed of thick lines
- There is no space between the figures and the backgrounds

### Differences:

- There is more negative space present in my work
- Picasso's added some highlights and shadows to the forms face where none is present in my work
- Color only appears in the background of my piece
- The contrast between my form and the background is greater due to the lack of color in the form

# Personal Art & Pablo Picasso

## Function and Purpose

**Picasso's work:** The purpose of this piece is personal expression. Picasso wanted to produce works that strayed away from looking realistic. To do this he began to show multiple angles of a figure at once, this he believed was a better interpretation of how humans actually perceive things.

**Personal Work:** the purpose of my work is to capture many moments of time. The function of this piece is to comment on the importance of growing up. Overall my piece focuses on a broader message.

**Similarities:** Both pieces have a connection to the human condition. As well both pieces capture some amount of time, either from a specific moment or over a long period of time. The pieces also have a connection to growing and evolving.

**Differences:** Picasso's work aims to challenge reality where as my piece adds emphasis on the importance of it. Picasso's piece is personal to him where as my piece many people can relate to the theme.



## Formal Qualities

**Similarities:** Both the pieces are constructed of mainly lines, these lines vary in thickness but there are more thick than thin lines. The colors that appear in both are both cool and warm in Picasso's work there is more detail in the background. The forms that appear in both are in the center. As well both of the figures have small shapes that appear in their hair. Patterns appear in both pieces, in Picasso's piece the pattern appears in the clothing and in mine the pattern appears in the layout of the colors in the background.

**Differences:** The form in Picasso's piece is in the center of the piece however they are not facing the center. In Picasso's piece he shows multiple angles of the form, but in mine the form can only be viewed from one angle. There is more space between the form in my piece and the background. In Picasso's piece color appears in both the form and the background, but color only appears in the background of my piece.





# Personal Work & Redon

"Overcoming",  
Dry Point, 22 cm  
x 15cm, 2018.



## Function and Purpose

**Redons Work:** The function of Redon's work is to question reality. As a founder of the Symbolist movement Redon wanted to create work that stunned his viewers. The works he created had a heavy emphasis on emotions and creating emotions.

**Personal Work:** The function of my work is to explore different techniques that evoke some kind of emotion in the viewers. The overall meaning this piece has for me is not letting emotions consume you.

Red

### Similarities in Function & Purpose

- Both intend to evoke some kind of emotion within the viewer
- Both pieces uses emotion as a principle to create the pieces

### Differences in Function & Purpose

- Redon has the ultimate goal to question reality
- My work intends to focus on emotions only
- Redon intentionally wanted to evoke negative emotions with his viewers

## Formal Qualities

### Similarities in Formal Qualities

- Both pieces feature one form at the center of the piece
- Both pieces are mainly constructed of lines, these lines vary in both length and width
- The figure that appear in both pieces have the appearance of having texture
- The color scheme of both pieces are greyscale

### Differences in Formal Qualities

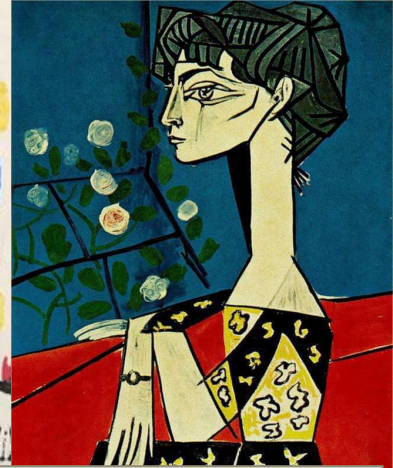
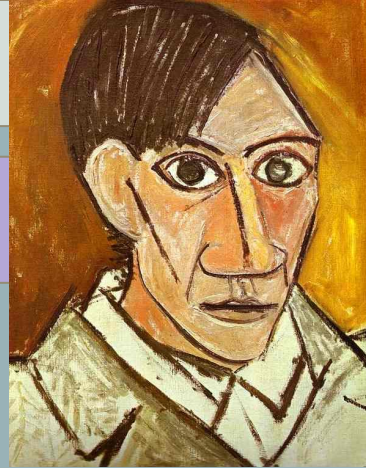
- Redons work has a higher level of highlights and shadows
- My work has more forms that appear in the foreground and the background
- My work has more negative space compared to Redons where he filled the negative space with shading

# Personal Work & Picasso

## Analysis of Cultural Significance

**Picasso's work:** Picasso was heavily influenced by the African art. This led him to create many of his works rejecting the traditional single point of view seen in the works of past artists. However before this Picasso had many periods, some of his most well known are his blue period and his rose period. From these periods till his Cubist movement Picasso believed that art was forever changing. Many of his works are capturing a single moment in time because of this idea. This explains the drastic changes of techniques and colors in his works throughout his career.

**Personal Work:** By looking at my piece it appears simple, this adds the the message behind the piece. With this piece I wanted to convey the message of the importance of the lessons taught at a young age, and how they will be used throughout a person entire life. My piece is capturing multiple moments in time.



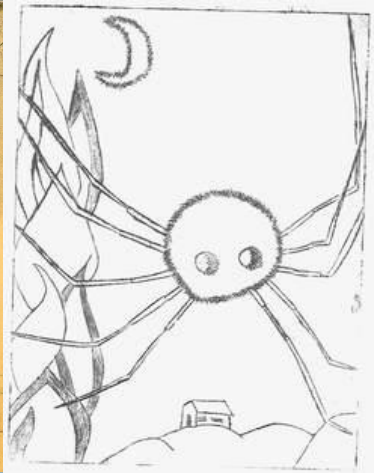
### Similarities

- None of the pieces were made reaction to a certain event or world issue
- All of these works are capturing some moments in time
- All of the themes behind the pieces have to do with the human condition and the importance humans place on time

### Differences

- Picasso took the idea of art is always changing and continuously changed the techniques, stylistic, and color he used to create his works
- Picasso aims to capture one moment in time where as my piece captures many
- Picasso was inspired by a previous art movement, where as my piece was inspired by a message that I wanted to convey

# Personal Work & Redon



## Analysis of Cultural Significance

**Redons work:** As one of the founders of the Symbolist movement Redon had the goal of creating pieces with discreet messages. A key idea of Symbolism is making the message of the piece hard for the viewers to find. Another goal of this movement was to create works that disturbed the viewers. To do this Redon often mixed myth and reality. This was done by mixing human features with those of animals, the effect this had on the works was it gave it a nightmare look.

**Personal Work:** My work was created to convey a sense of calm within the piece and in the viewers. The overall intention was to evoke some kind of positive emotions within the viewers.

### Similarities

- Neither of these pieces were created in reaction to a world problem or an event
- Both pieces aim to invoke reactions within the viewers of the piece
- Both pieces include a key element of the Symbolist movement, that is blending reality with myth
- The messages behind the pieces are not directly put out for the viewers to understand. They appear to be simple images

### Differences

- The emotions Redon wants to invoke are negative compared to those of my piece which are meant to invoke more positive ones
- Redon was conveying the theme established for the Symbolist movement, this is creating a piece with an unclear message that disturbed the viewers